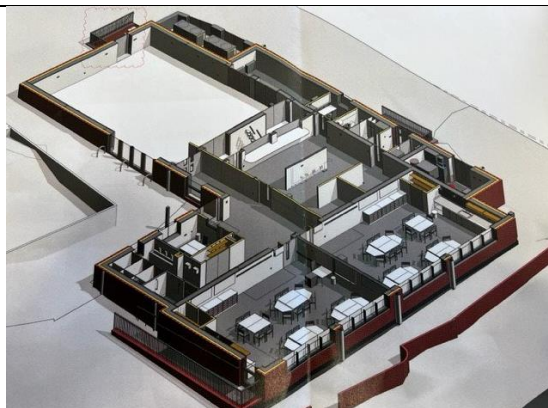
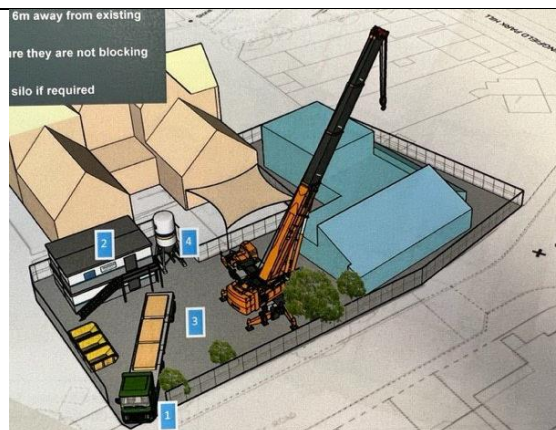


Site Photos – please use these to support you have conversations with your children



1. We are having a new building to replace our lunchbar.



2. There will a construction site on the lower KS1 playground. This playground will be closed.



3. The car park gate will be still open



4. You can still reach the school office through the normal door but only from the car park



5. The boat is going to be removed and then returned



6. The train is going to be removed and then returned



7. The EYFS access will be open as normal



8. The top blue doors will be open as normal



9. The blue middle doors will be open



10. James Class door will be open



11. Jeffers Class door will be closed



12. The side playground will be open.



13.The hall will be used for all the dinners



14.The double gates will be open for Years 3, 4, 5, 6 and anyone with mobility needs.



15.The field gate will be for EYFS, Year 1 and Year 2



16.This will be in place until the end of July 2023.